

About the project

Bane NOR (Norwegian railways) renews the signaling systems on the railway. Today's outdated technology is being replaced by ERTMS - a digital signaling system common to all European countries. ERTMS stands for European Rail Traffic Management System.

Project started on 2021 and will continue till 2034.

Major figures of frame contract:

- 33 lines over all Norway;
- 375 stations;
- More than 400 level crossings;
- More than 4000 point machines;
- More than 4000 km cable installation;
- More than 20 000 Eurobalises;
- More than 4000 axle counters.

Who We Are

About Us

Belam Riga Norge are the permanent establishment in Norway of a Latvian company SIA "Belam-Riga".

Belam Riga Norge is performing works in Bane NOR ERTMS project as a subcontractor of SIEMENS until 2034.

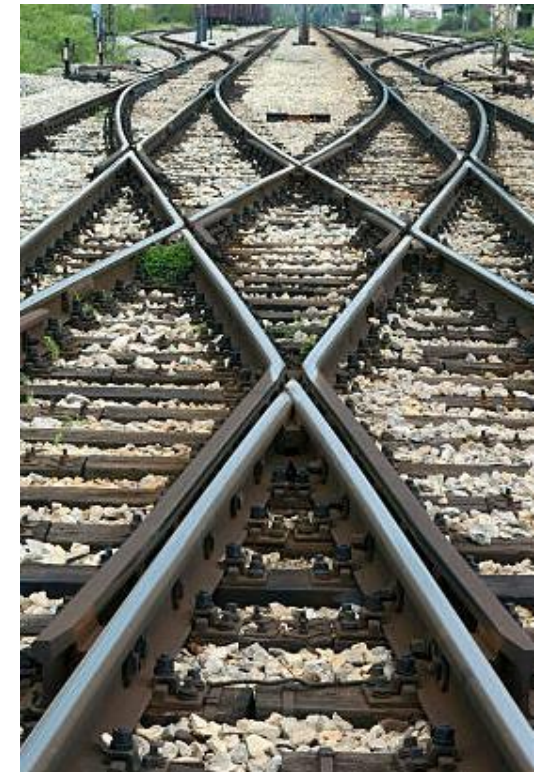
Contact Us

Phone: +37037302930

Email: hr@belam.eu



Belam Riga Norge
Fredrik Selmers vei 6, Helsfyr, Norway



Belam Riga Norge

Join our team in Norwegian railways signaling system renovation project!



We are hiring:

- Electricians
- Rail Track Workers
- Warehouse Keeper

For working on railways sector in Norway.

**We are waiting Your CV on
hr@belam.eu**

We offer:

Salary (taxes included):

Electrician with DSB certificate from 250 Nok/hour;

Electrician without DSB certificate 230 Nok/hour;

Rail track worker - 220 Nok/hour;

Warehouse keeper - 200 Nok/hour;

Working time - 140-210 hours per month.

“It is a huge opportunity to make Your career in Norwegian railways.”

Company paid lodging (one person per room);

Travel by company car to / from the workplace;

Working in 7 days on / 7 days off shifts;
Travel between home country and site two times per month (company paid travel cost). One return travel per shift;

130 NOK meals supplement per working day;

45% rate supplement for night work.

Shift work and travel activities must be expected.



We expect:

- Experience in installation works on railway track. Working Experience in complex construction or road infrastructure projects will be considered as equivalent;
- Good speaking and reading English skills;
- Understanding of technical documentation and drawings;
- Responsibility;
- Basic computer skills of using PC-based tools;
- Driver's license category B, preferably BE;
- Experience in installation, maintenance of railway signaling systems - would be an advantage.

